



2019 Stewardship Grant Program Guide

Overview

The Ramsey-Washington Metro Watershed District (RWMWD) Stewardship Grant Program offers financial, educational and technical assistance to protect and improve water resources within our watershed.

Purpose

The Stewardship Grant Program may be used by public or private landowners for projects that support one or more of the following:

- Promote actions that prevent flooding or lessens the effects of drought.
- Protect and restore clean water by capturing pollutants in rainwater runoff.
- Increase the watershed's ability to store water.
- Preserve and restore native plant and wildlife communities, especially lakes, rivers and wetlands.
- Protect and preserve groundwater quality and quantity.
- Maintain practices installed through the Stewardship Grant Program.

Available funds

RWMWD will accept applications year-round until funds are gone. You are encouraged to apply early in the year. Funded percentages are based on specific criteria including location in the watershed and type of project proposed. Please see the map and table on the following page or refer to our website for more information: rwmwd.org/get-involved/stewardship-grants

Eligible Expenses

RWMWD may offer to fund all of or a portion of your application. Stewardship Grants reimburse a portion of your costs for materials and labor. Your application must be approved by RWMWD prior to starting any work. Projects started or completed when submitted are not eligible. In-kind services will not be considered for matching contributions. Submitted projects must be for items above and beyond all permit requirements.

Maintenance Reimbursement

If a maintenance grant is approved for multiple years, you must submit reimbursement requests to RWMWD annually, typically in the fall when work is complete for the season. Maintenance grants are for routine maintenance only.

Selection Process

RWMWD staff will review and approve applications under \$5,000. Completed applications can be submitted anytime for review. The Board of Managers will review and make the decision on all others based on the schedule below. We may request changes to your proposed plan to better suit the needs of the program.

2019 Deadlines for Projects Requesting Over \$5,000

Application Submittal Deadline (4 p.m.)

Board Meeting Date

Wednesday, December 12, 2018.....	Wednesday, January 3, 2018
Wednesday, January 16	Wednesday, February 6
Wednesday, February 13.....	Wednesday, March 6
Wednesday, March 13.....	Wednesday, April 3
Wednesday, April 10.....	Wednesday, May 1
Wednesday, May 15.....	Wednesday, June 5
Wednesday, June 12.....	Wednesday, July 3
Wednesday, July 11.....	Wednesday, August 1
Wednesday, August 14.....	Wednesday, September 4
Wednesday, September 11.....	Wednesday, October 2
Wednesday, October 16.....	Wednesday, November 6
Wednesday, November 13.....	Wednesday, December 11*
Wednesday, December 11, 2019.....	Wednesday, January 8, 2020*

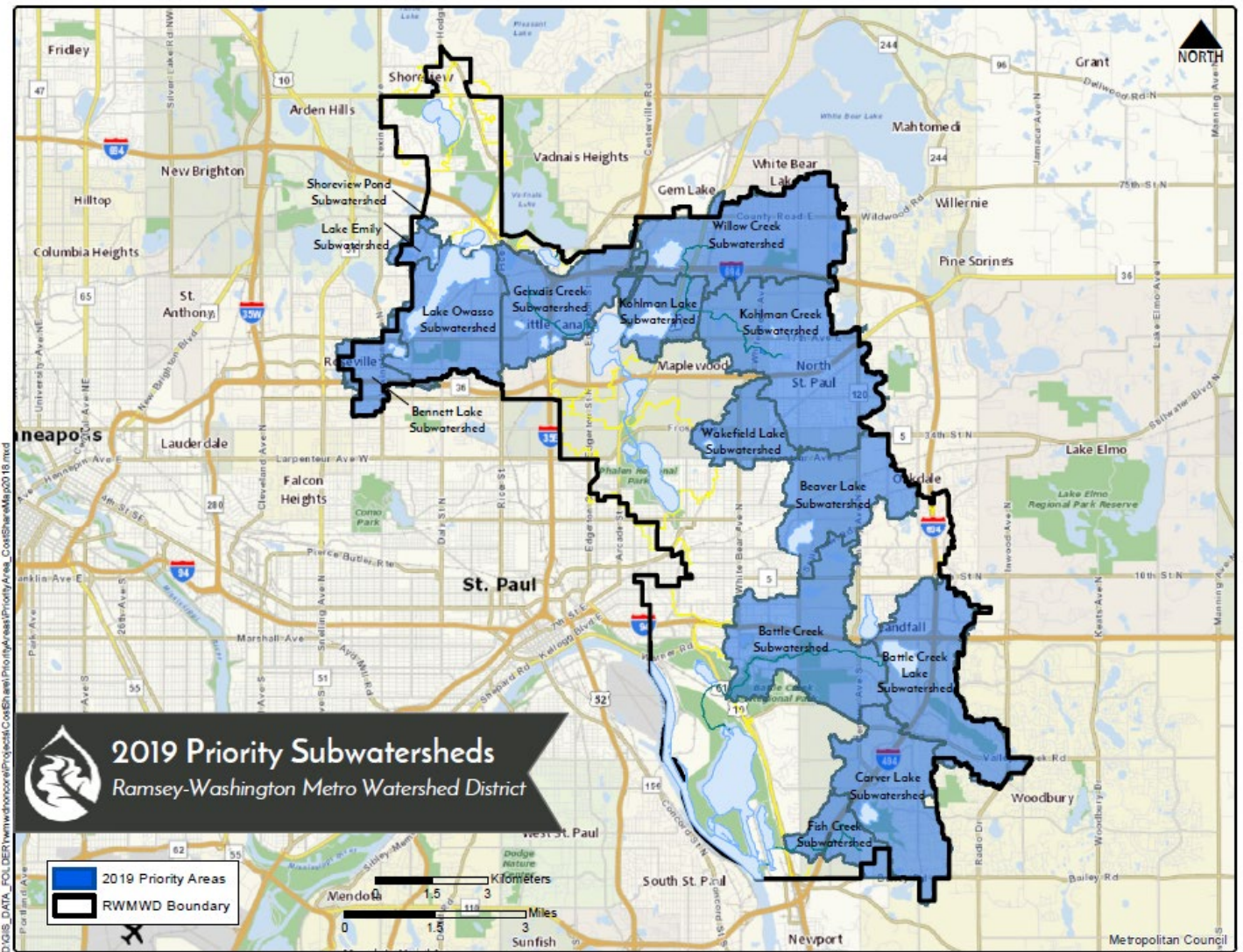
**Please note date change due to conflict or holiday. Meeting will not be held first Wed.*

Watershed Improvement Program Coverage Amounts

	Type of Projects	Cost Share %	Maximum \$*
Homeowner	Habitat restoration or rain garden without hard surface drainage	50%	\$15,000
	Rain garden with hard surface drainage, pervious pavement	75%	\$15,000
	Shoreline restoration (below 100-year flood elevation with actively eroding banks)	100%	\$15,000
Commercial, Church, School, Government, Associations, etc.	Habitat restoration	50%	\$15,000
	Shoreline restoration	100% below 100-year flood elev. with actively eroding banks	\$100,000
	Water quality BMPs	75% in non-priority drainage areas	\$50,000
		100% in priority drainage areas*	\$100,000

*Projects located within RWMWD priority subwatersheds, flood reduction, groundwater recharge, and certain demographic areas may be eligible for additional funding. Contact us with your project location to determine maximum coverage amount.

2019 Priority Areas: Non-residential projects only (shown in blue)



Interactive map available at: rwmwd.org/explore/project-map

Stewardship Grant Program F.A.Q.

Who can apply?

All residents, not-for-profit and religious organizations, governmental agencies, businesses and corporations, public and private schools within the RWMWD. Visit our website to determine if you are within the boundaries: rwmwd.org/are-you-in-the-watershed

Where do I get an application?

You can apply online at: rwmwd.org/get-involved/stewardship-grants

Where do I submit the completed application or receipts for reimbursement?

Via email:

paige.ahlborg@rwmwd.org

Via US Mail:

Paige Ahlborg

Ramsey-Washington Metro Watershed District

2665 Noel Drive

Little Canada, MN 55117

What types of projects are considered for the program?

- Rain gardens with priority given to those that take hard surface runoff.
- Pervious asphalt, concrete and pavers.
- Volume reduction practices (infiltration basins and trenches, cisterns, filtration systems).
- Native habitat restoration with priority given to waterways, lakes, buffers, and ponds.

Do I have to plant native plants?

The planting plan must consist of 75 percent native plants, and the remaining can be cultivars of natives.

What percentage of cost share is offered?

Cost share percentage ranges from 50-100 percent, depending on type of project and location.

What is a priority area?

Water quality priority areas are defined annually by our watershed management plan goals, along with federal and state regulations. See the map on previous page for current priority areas. Other priority areas have been identified based on flood control, groundwater recharge and certain demographics, and may be eligible for additional funding.

How long can I take to complete the project?

The funds must be used within one year of approval.

Do I have to do anything after approval?

You are responsible for securing all permits necessary for the work. Residential projects will enter into a 5-year maintenance agreement, and commercial projects enter into a 20-year maintenance agreement. The applicant is responsible for all ongoing maintenance of funded projects unless otherwise stated. Maintenance grants are available to projects less than five years old.

Where do I look for a contractor?

You can download a supplier list on our website at: rwmwd.org/get-involved/stewardship-grants. We recommend getting more than one bid.

Who do I call with questions on the application or to schedule a site visit?

Design assistance and cost estimates are available through your county's conservation district.

Ramsey County: Michael Schumann, 651-266-7275 or michael.schumann@co.ramsey.mn.us

Washington County: Tara Kline, 651-330-8220 x28 or tkline@mnwcd.org